

Reduce Excess Inventory. Reduce Working Capital. Reduce Stock-Outs.

Sage Inventory Advisor is an affordable cloud solution that helps companies reduce stock outs, excess inventory, and working capital. It connects to Sage ERP data to deliver inventory health check, produce quality forecasts, reduce the time spent on manual tasks, and solve for the optimal investment required to achieve target fill rates. A web based mobile solution, Sage Inventory Advisor is easy to use and slashes time spent on forecasts and ordering. It can be implemented cost effectively and used in just hours.

Fast to Implement and Cost-Effective

A cloud solution, Sage Inventory Advisor can be implemented cost effectively in just hours.

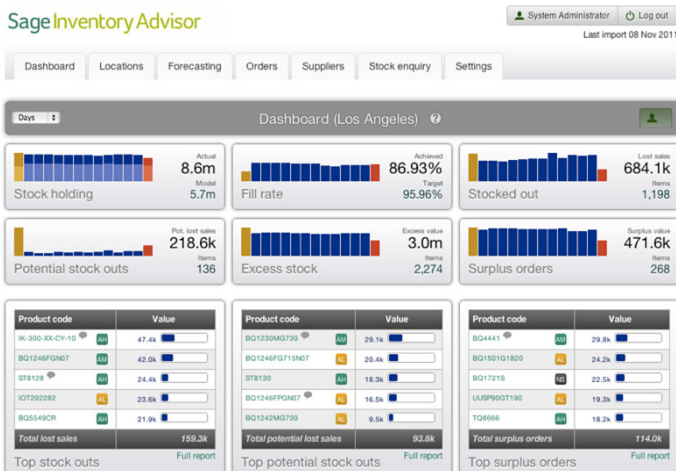
- Allows anytime, anywhere access.
- Eliminates local server installation.
- Provides worry-free updates and maintenance.
- Delivers rapid deployment and scalability.
- Best-in-class availability level.
- Highly secure using PGP data encryption/decryption.

Benefits

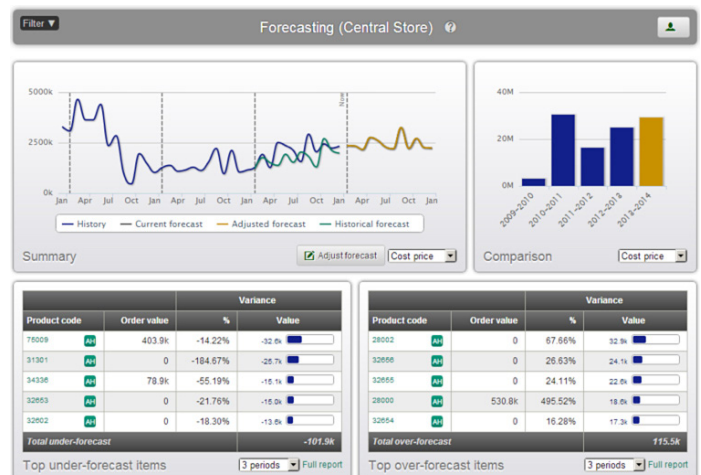
- Reduce excess inventory by 10%-15% and improve inventory turns
- Reduce working capital and free up 15%-20% of cash tied into inventory
- Improve fill rates by 2%-10% and eliminate stock-outs
- Reduce time spent on forecasting by as much as 50%

“In the first 6 months, we had a 13% increase in stock availability with a smaller increase in focused investment. In summary, Sage Inventory Advisor has given us a valued solution that provides us with a competitive edge.”

—Steven Cumper, director and cofounder, Medshop (Medical Supplies)



Track performance and identify problem SKUs through interactive dashboard with drill-down features.



Leverage the sophisticated forecast engine to account for seasonality and trends with manual override.